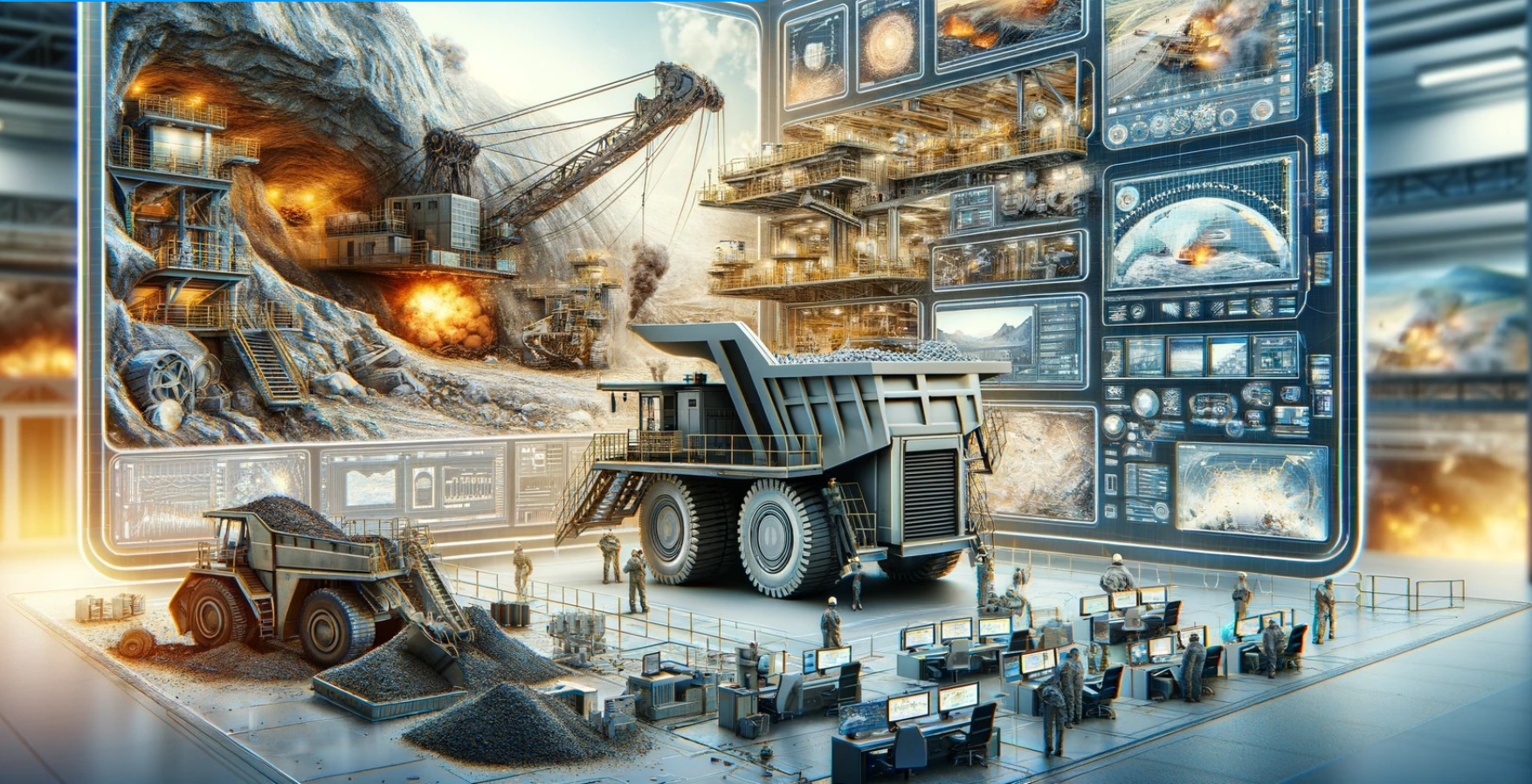


The future of digital fatigue and drowsiness management





BUSINESS CASE



Peru



Telecommunications



<https://crintegralservice.com/>

CLIENT PROFILE

C&R INTEGRAL SERVICE · PERU



<https://crintegralservice.com/>

C&R Integral Service S.A.C. is a Peruvian telecommunications engineering company founded in 2006. For over 20 years, it has served the mining, energy, and telecommunications sectors nationwide.

Motorola Platinum Certified Partner and authorized representative of Cisco, Avigilon, and Hikvision, it executes complex projects: mission-critical networks, AI-powered cameras, and tower maintenance for industrial clients throughout Peru.



20

years in the market

+500

employees





BUSINESS CASE

Client: C&R INTEGRAL
SERVICE

PROBLEM and PAIN
POINTS

Fatigue in mining: A SILENT, EVER-PRESENT ENEMY IN OPERATIONS

C&R Integral Service deploys technicians and engineers in demanding operational environments (mining camps, high-elevation sites, and remote zones) providing telecommunications and technology services, including tower sites, remote installations, and long-duration shifts.

An initial biometric screening of 84 operators revealed that 74% showed measurable fatigue risk, exposing the company to incidents, productivity loss, and SUNAFIL sanctions under Law 29783.



74

Workers with Fatigue-
Related Risk



Logifit

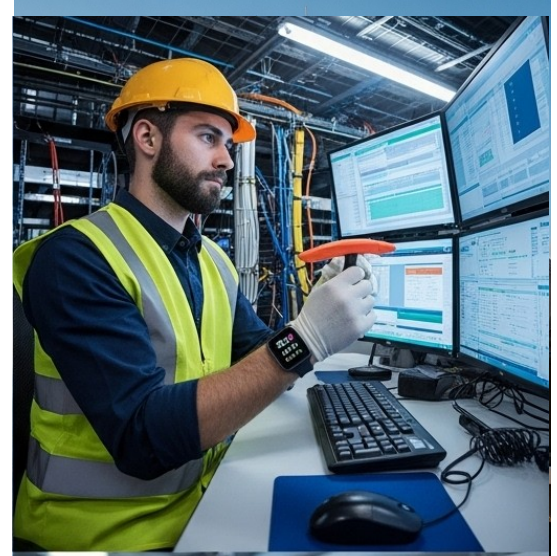
BUSINESS CASE

Client: C&R INTEGRAL SERVICE
STRATEGY, ACTION PATHS,
RESULTS

TECHNOLOGY WITH MINING EXPERIENCE SUPPORTING HEALTH AND SAFETY

Logifit was deployed monitoring of 84 technicians with high-performance smartbands and Psychomotor Vigilance Tests (PVT), integrated into the company's preventive safety management flow (pre-work field assessment)

Continuous monitoring over months across multiple mining projects enabled supervisory intervention before risk materialized. After deployment, workers at fatigue risk dropped from 74% to 6% — a **68 percentage** point reduction — strengthening a data-driven safety culture.



A VISION OF PREVENTIVE SAFETY

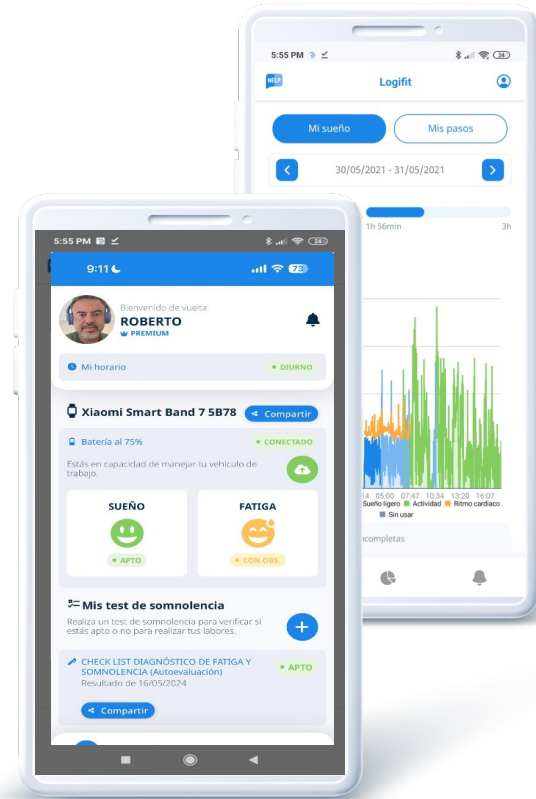
changing the paradigm and innovating

C&R INTEGRAL SERVICE's commitment to operational safety produced measurable results throughout the deployment at C&R Telecommunications, reinforcing a culture of prevention and well-being for all personnel.

The Logifit model integrates technology with continuous support, positively influencing a more robust safety culture and friendly monitoring that directly impacts the health and well-being of on-site personnel.

“With Logifit we went from 74% of our operators at fatigue risk to just 6% — that's the kind of result that changes how you manage safety in the field.”

MARX Sanchez Culqui
General Supervisor — C&R Integral Service





C&R INTEGRAL
SERVICE S.A.C

<https://crintegralservice.com/>

Logifit

TRANSFORMING BENEFITS INTO WELL-BEING OUTCOMES



BEFORE

74

Workers with
Fatigue-Related
Risk

BENEFIT

+92



NOW

6%

Workers with
Fatigue-Related
Risk

“Real-time fatigue data gave our supervisors the ability to act before an incident occurred.”

ROBERTO Portal Huingo, Operations
— C&R Integral Service





The future of digital fatigue and drowsiness management

